

ACCESS

Mini mouse

A smaller version of a standard size mouse but made for smaller hands.



External touch pad

A track pad designed to provide cursor control using a finger for individuals who have physical disabilities. A person moves his/her finger on the pad and the cursor on the screen replicates the movement. It is an ideal replacement for a mouse in situations where there is limited desk space or for people who have limited arm movement but good finger control.



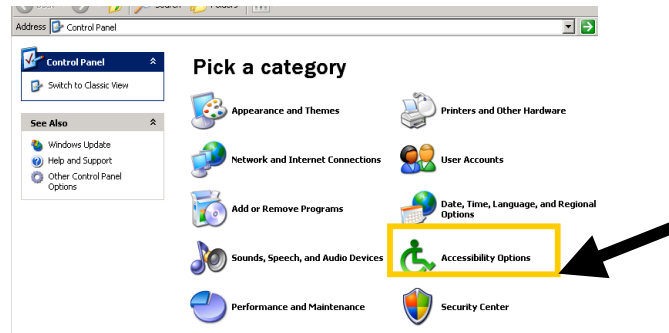
Dragon Naturally Speaking

This software is a voice-recognition program that benefits from new automation tools, improved hands-free navigation, updates to the interface, and—most important—increased accuracy and speed.



Computer Accessibility Options

Accessibility makes the computer easier to see, hear, and use. Variety of options can be found in Control Panel.



The DVORAK layout features 70% of keystrokes are on the home row; 22% on the top row; 8% on the bottom.

In QWERTY, only 32% of keystrokes are on the home row. Which means most of the time, typists' fingers are either reaching up for the top row (52%) or down for the bottom row (16%). So not only does QWERTY do nothing for typists, it actually hinders them.



Dvorak further increases typing speed by placing all vowels on the left side of the home row, and the most commonly used consonants on the right side. This guarantees that most of your strokes alternate between a finger on your right hand (consonant) and a finger on your left (vowel). Alternating between fingers from either hand is faster — just imagine texting with one hand or drumming with one stick.